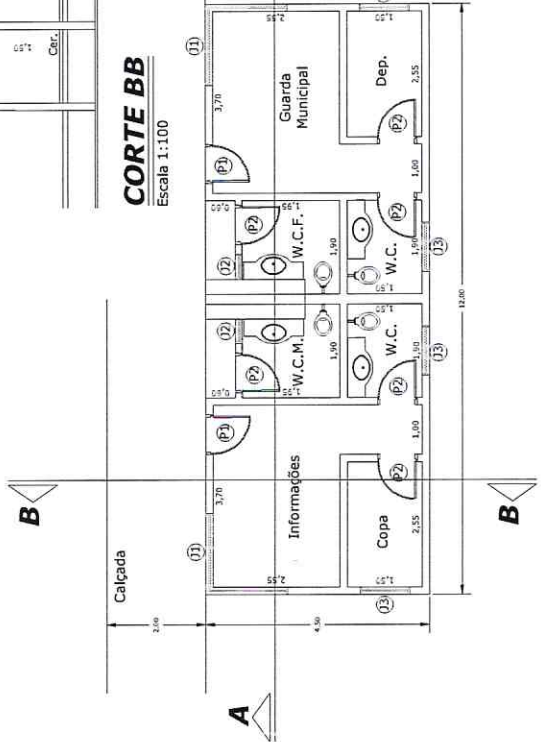
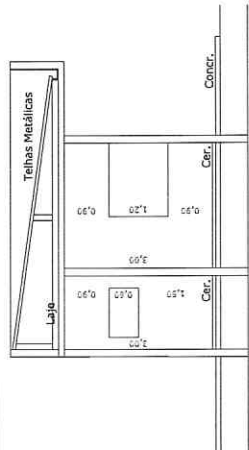
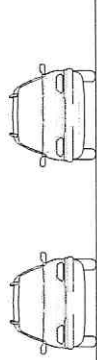
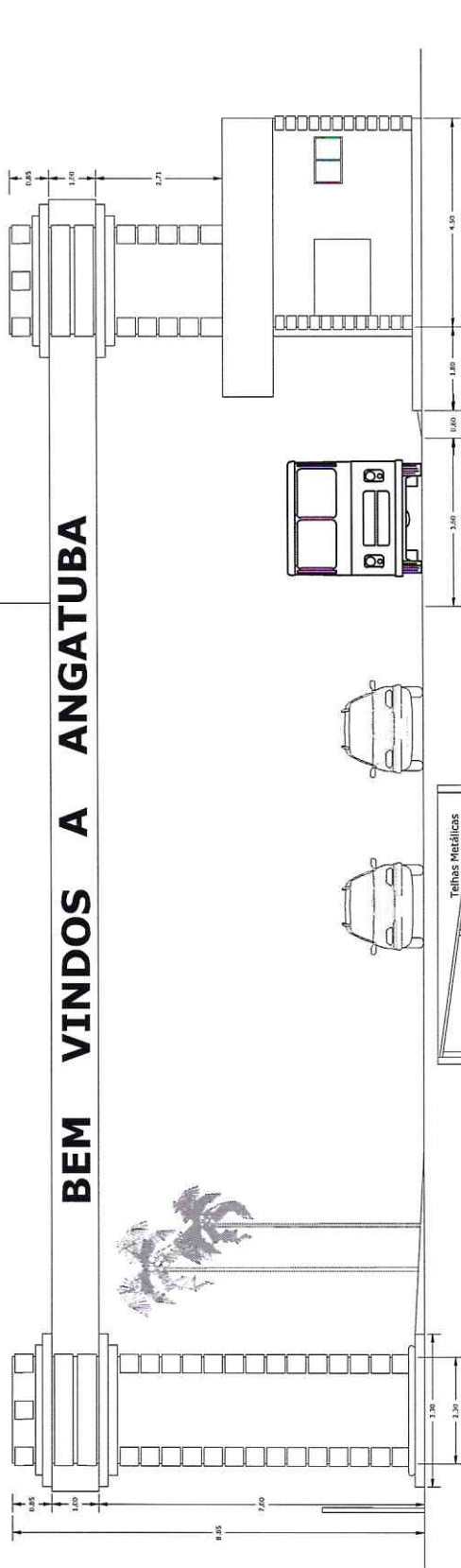


Estrutura Metálica Treliçada rev. com chapas de Aço Inoxidável



Obra: **Serviços de Complementação do Portal**
Assunto: **Detalhes**
Localização: **Acesso "Ivens Vieira", Km 2,5 - Angatuba - SP**

Coordenadas de Localização:
23°30'46,03" S
48°24'03,61" W

Engenheira Civil ~~Vivian~~ **Bereira da Costa**
CREA/SP - 507.019.896.8
Responsável Técnica

Data: **Julho/2019**

Escala: **1:100/1:50**

PLANTA BAIXA
Escala 1:100