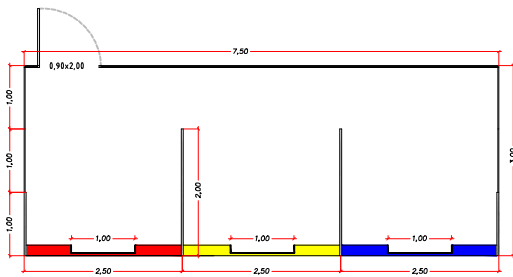


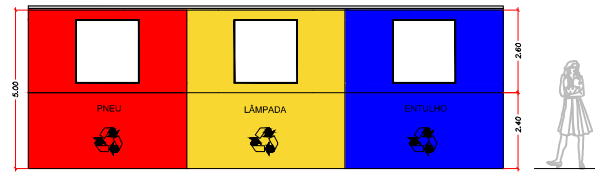
FOSSA SÉPTICA E POÇO ABSORVENTE

ANGATUBA.....1999 ESC. 1:75
 PROPRIETÁRIO RESP.TÉCNICO

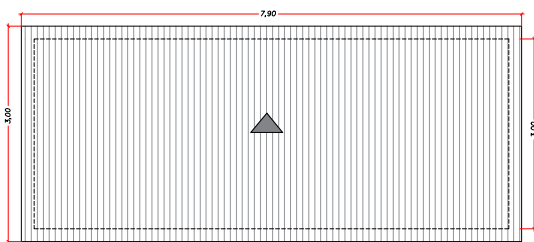
JOÃO CARLOS DA SILVA HENRIQUE JOSÉ ALCIATI
 CREA.0600.88.102.3 -IM.5.2.1112
 ART.Nº 0600.88.102.3.99



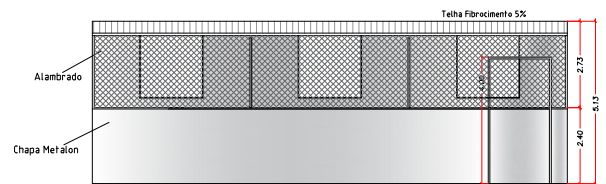
Planta Baixa
 esc. 1:50



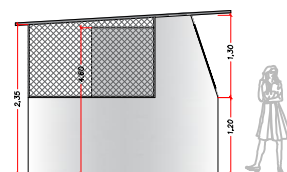
Fachada Frontal
 esc. 1:50



Cobertura
 esc. 1:50



Fachada posterior
 esc. 1:50



Fachada lateral
 esc. 1:50

OROS