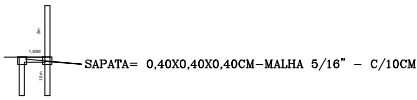


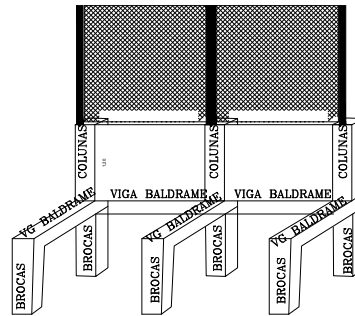
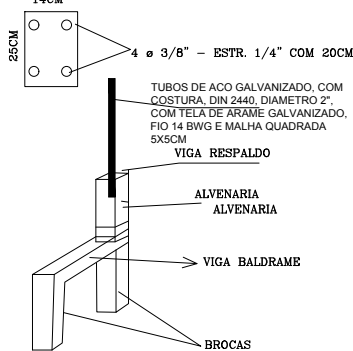
DEMOLIÇÃO E FEITIO DO MURO DA QUADRA DE CIMENTO DO ADA.
MAI.21 - 32,50 M.

COLUNAS - 0,14X0,20X1,20M



HENRIQUE JOSÉ ALCIATI
ENG. CIVIL
CREA - 0600.88.102.3

VIGA SUPERIOR



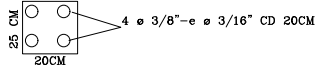
CROQUIS SEM ESCALA

REPRESENTATIVIDADE TRIDIMENSIONAL S/ESCALA

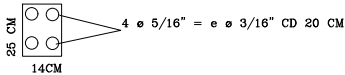
45 BROCA 0,20X0,20X1,25
18 VIGA PE GALINHA - 0,20X0,20X1,50

SAPARA-S/ESCALA

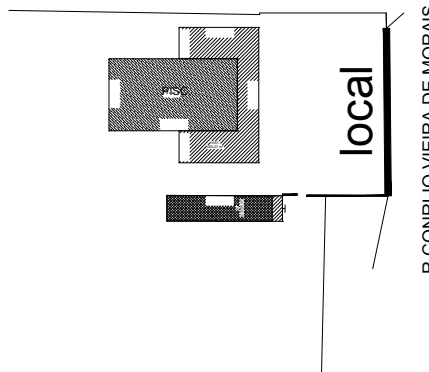
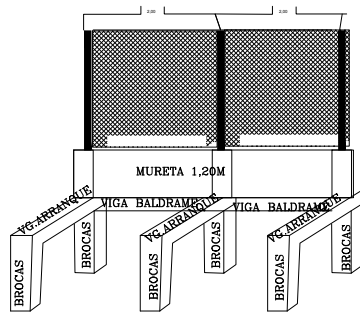
VIGA BALDRAME



VIGA DE RESPALDO



LOCALIZAÇÃO



CROQUIS SEM ESCALA

01	02	03	04	05	06	07	08	09	10	11	12	13	14	15	16
Fundação			Muro Bloco Cerâmico												